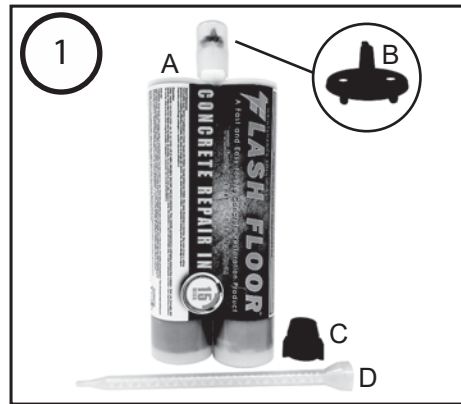


CARTRIDGE ASSEMBLY



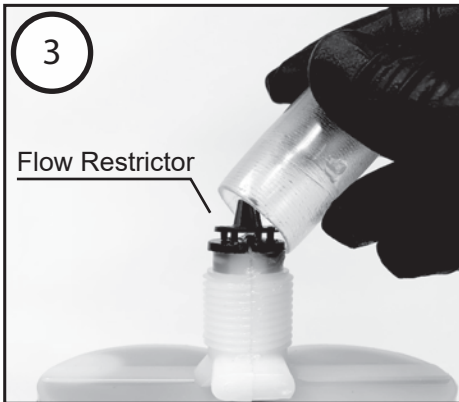
Before assembling a Flash Floor cartridge or using it to make a repair, always use PPE: eye protection, gloves, and respirator mask.



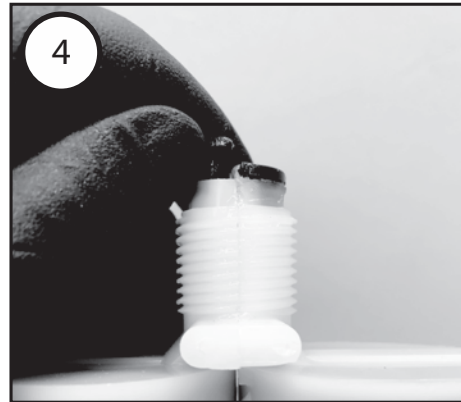
Gather the following items to assemble your cartridge: cartridge (A), Flow Restrictor (B), Nut (C), Static Mixer (D).



Carefully cut the top of the foil pouch your cartridge comes in. Remove your cartridge and accessories. Set aside the bag for later use.



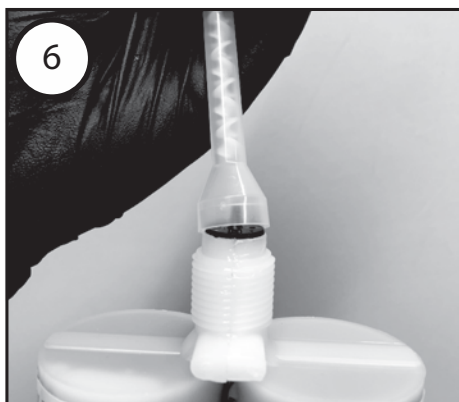
Remove the protective cap from the top of the cartridge.



Set aside your Flow Restrictor and remove the 2 plugs from the top of your cartridge. Save the 2 plugs in case you want to cap off your cartridge and use it again later.



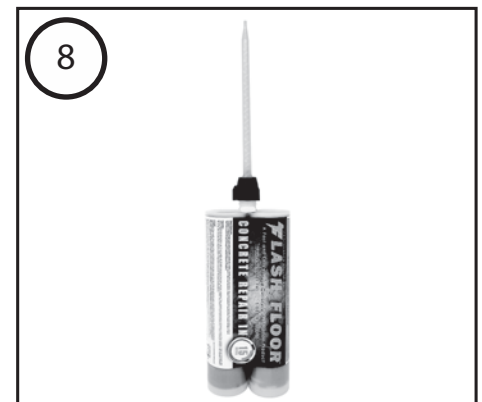
Insert the Backflow Restrictor into the mouth of both sides of the cartridge. Make sure the 2 holes in the Flow Restrictor are lined up with each opening of the cartridge.



Slide the Static Mixer over the top of Backflow Restrictor and the rim of the cartridge.



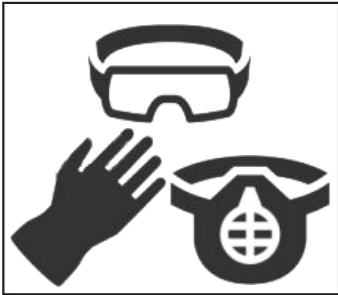
Secure the Static Mixer and Backflow Restrictor to the cartridge by slipping the Nut over the Static Mixer. Screw the Nut firmly to the cartridge.



Keep your cartridge in the upright position until you are ready to use it.

INSTALLATION INSTRUCTIONS

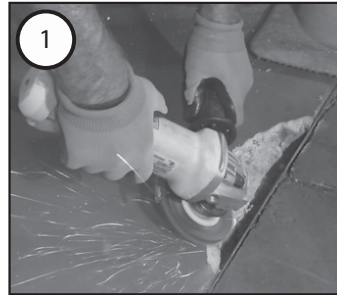
How to videos can be found on our website at www.flashfloor.net/flash-floor-videos or scan this QR code with your phone:



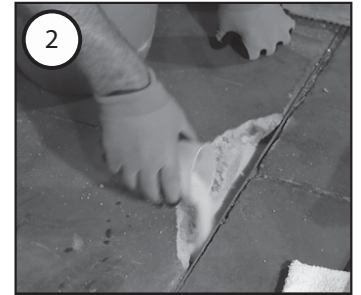
Before assembling a Flash Floor cartridge or using it to make a repair, always use PPE: eye protection, gloves, and respirator mask).



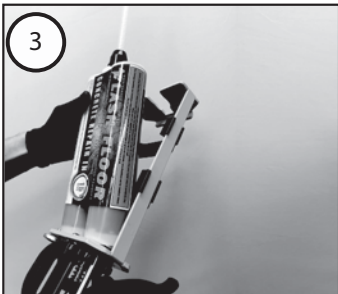
Before making a repair make sure there is no water or moisture present in the repair area.



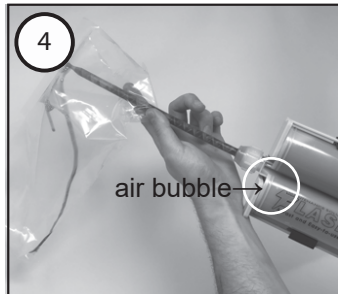
1 Clean the surface of the repair area with an angle grinder or chipping hammer. Other tools may be used as long as they clean the surface and expose the pores of the concrete.



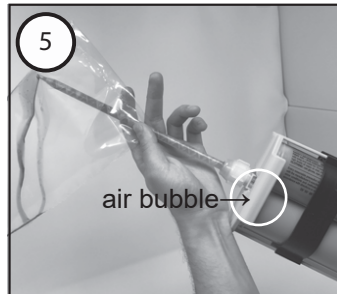
2 Fill your repair area with 100% dry sand. If your area is deeper than 1 - 2 inches then fill it 1 - 2 inches at a time and repeat steps 6 and 2 until the repair area is filled.



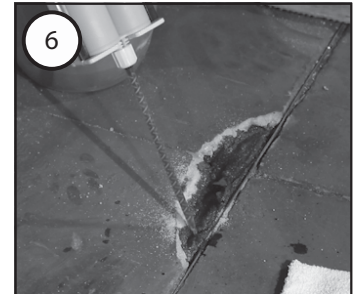
3 Secure the cartridge into your Applicator Tool.



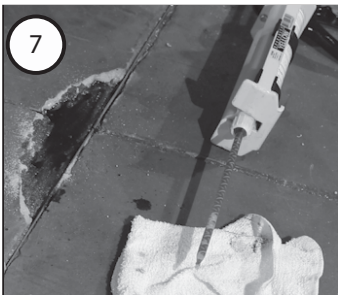
4 Using the cartridge pouch, purge the air from one side of the cartridge. Pointing the tip at an upward angle into the pouch, squeeze the trigger until all the air is out of the lower tube of the cartridge.



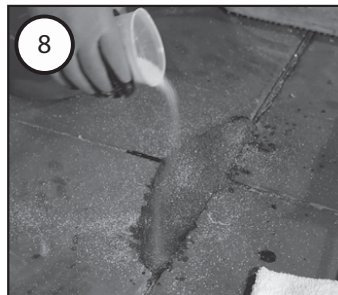
5 Flip the cartridge over and repeat step 4 to purge the air from the other tube. Once the air has been purged, point the cartridge downward or horizontally to prevent mixed Flash Floor from flowing backwards into the cartridge.



6 Saturate the sand with Flash Floor, let it settle for 3-5 seconds, and repeat until it pools at the surface. Cracks or voids may cause drainage. Watch the "Creating A Seal" video for preventing this.



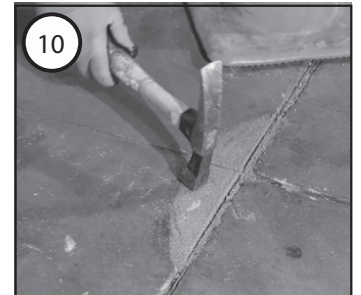
7 It is important to always keep your cartridge pointing downward or horizontally to prevent the Flash Floor mixture from flowing back into the cartridge.



8 Lightly sprinkle sand over the repair to soak up excess Flash Floor.



9 With a wide putty knife or trowel, scrape or trowel the surface smooth and/or level it with the surrounding concrete. (A final sprinkling of sand may be needed for added traction.)



10 Allow 15 - 30 mins (depending on the ambient temperature) for Flash Floor to harden. Repairs made in Cold Storage can take much longer to harden.